

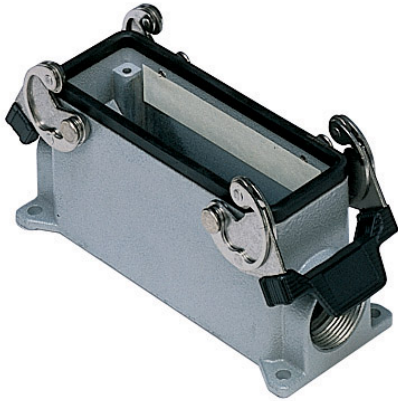
Part number



MMP 16.225



Brief description:

surface mounting housings with 2 levers, size "104.27" insulated 830V version, M25 x 2, insulated 830V version, IP66



Product description		Approvals / Standards	
Version	insulated 830V version	Quality mark	 (type:4/4X/12),  , EAC
Series	Surface mounting housings with 2 levers	Conformity	CQC, CE
Product type	with 2 levers	General ordering information	
Family	830V enclosures for CME inserts	EAN13 code	8015747058773
Size	size "104.27" insulated 830V version	Tariff number	85369095
Technical data		Packaging Information	
Material	metal	Sub-packaging weight	1,89 kg
IP degree of protection	IP66 (and IP69K DIN 40050 - 9)	Sub-packaging description	Plastic packaging
Cable entry	M25 x 2	Sub-packaging quantity	5 Pcs
Further technical details		Sub-packaging EAN barcode	8015747058780
Weight	377,00 g		

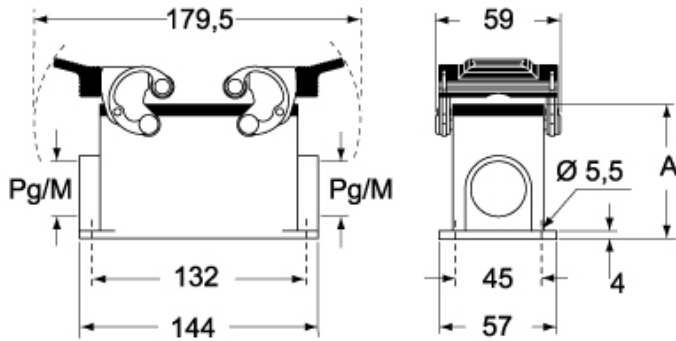
Part number

MMP 16.225

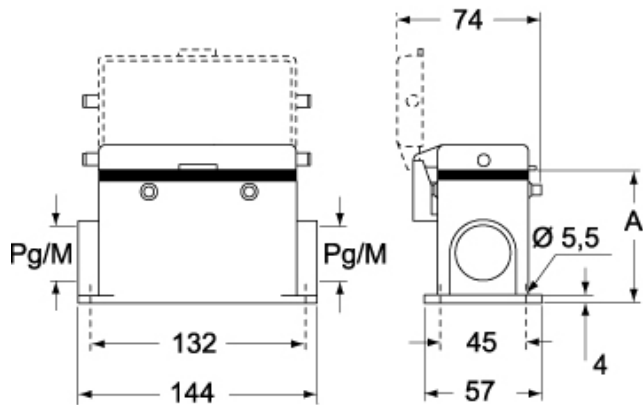


Catalogue drawings

CMP CMAP - MMP MMAP



CMP CS/CP CMAP CS/CP - MMP CS/CP MMAP CS/CP



	A
CMP / MMP	63
CMAP / MMAP	80
CMP CS / MMP CS	63
CMAP CS / MMAP CS	80
CMP CP / MMP CP	63
CMAP CP / MMAP CP	80